



www.FieldProtectionAgency.com
info@fieldprotectionagency.com
Office (508)832-0395

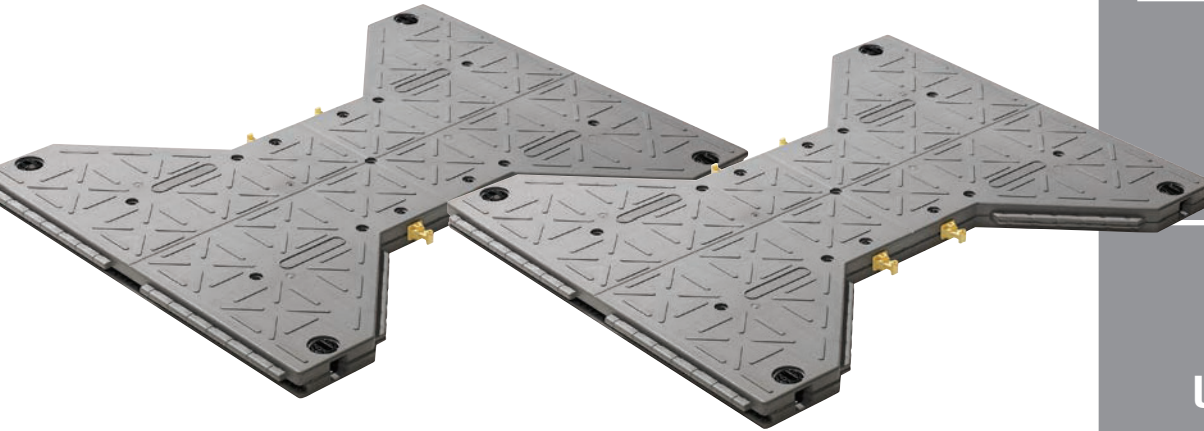
Field Protection Agency is a proud provider of **I-Trac™**

I-Trac™ is a state-of-the-art modular temporary roadway matting system that enables vehicular traffic over inhospitable and unsafe ground.

I-Trac™ has quickly become the temporary matting solution of choice in a variety of industries including Construction, Oil and Gas, Utilities, Events and Military.

I-Trac™ boasts a unique patented interlocking design that creates a contiguous surface capable of carrying extreme loads over virtually all ground conditions.

I-Trac™ can be deployed as a temporary roadway, helipad or tarmac. The advantages that I-Trac offers in comparison to alternative products is its extreme strength to weight ratio.



- **47.5" x 36.3" x 2" Bowtie Shaped**
- **Load Capacity 86,400 lbs/Sq Ft**
- **High-Impact Polypropylene with UV Inhibitors**
- **Panel Area: 8.6 Sq Ft**
- **Quick & Easy Installation**
- **Translucent Allows for Grass Growth**

**PROFESSIONAL GRADE
TEMPORARY ROADWAY**

MILITARY DEPLOYMENT SYSTEM

**CAPABLE OF SUPPORTING
600 PSI**

REMOTE ACCESS

38 LBS PER PANEL

**FIRE RATINGS:
UL94HB, ASTM 2859**

PATENTED CAM-LOCK SYSTEM

100% RECYCLABLE